

Charles A. Coltman Jr., MD

1930-2018

- BS, MD University of Pittsburg
- Residency, The Ohio State University
- Professor of Medicine, University of Texas Health Science Center at San Antonio
- Medical Director, Cancer Therapy and Research Center
- Director, NCI Designated San Antonio Cancer Institute
- Over 250 publications, including practice changing clinical trials



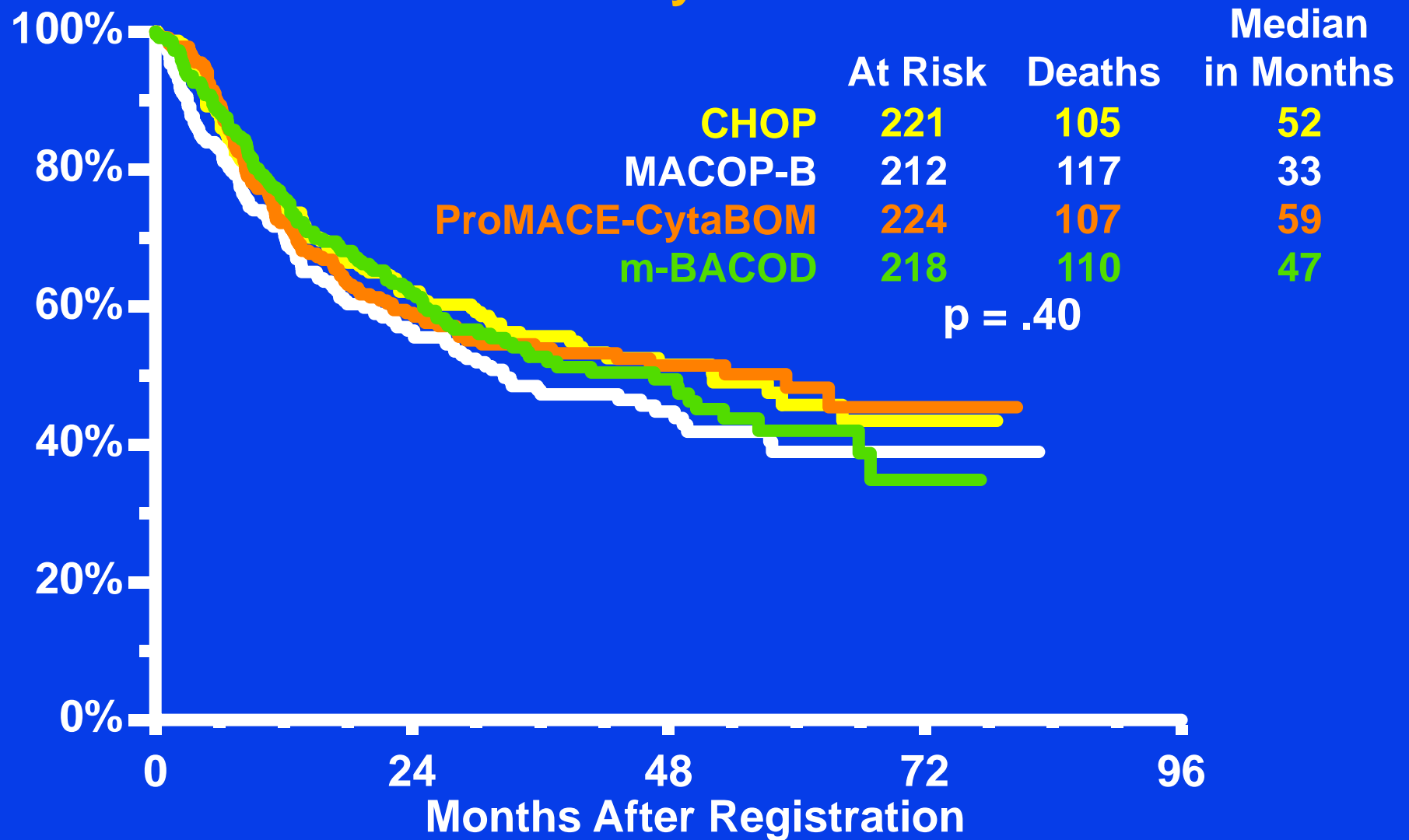
Charles A. Coltman Jr., MD

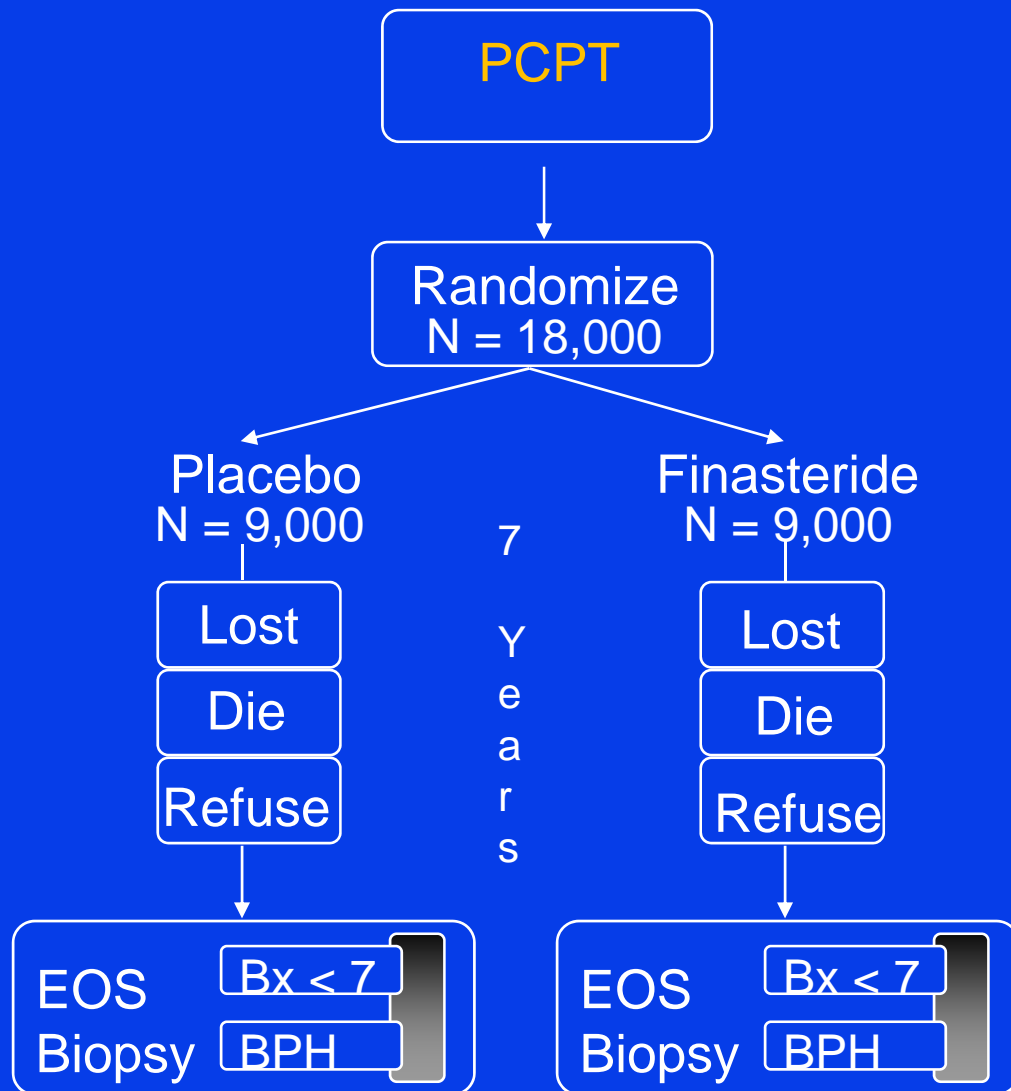
- Chairman, SWOG 1981- 2005
- ASCO
 - President, 1988
 - Karnofsky Lecture, 2001
 - Fellow, 2007
- San Antonio Breast Cancer Symposium
- ASCO/AACR (Vail) Methods in Clinical Cancer Research Workshop 1996-1999
- SWOG Young Investigators Course, 1999 -
- US/Japan Clinical Trials Summits, 1992-2005




SWOG NHL Trial 8516

Survival by Treatment Arm



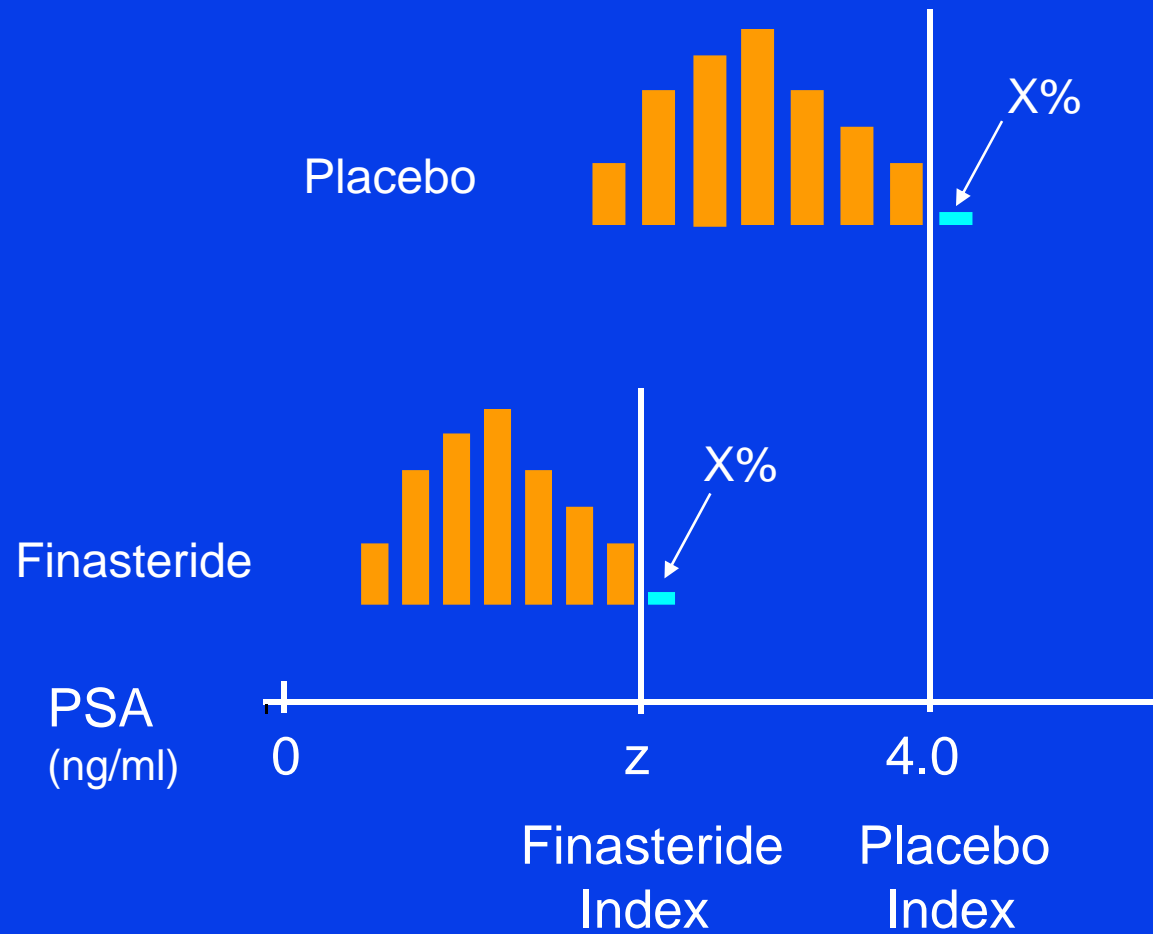


 = Cancer
Detected
Years 0-7

Bx < 7 = Biopsy Detected
Cancer Prior to
Year 7

BPH = Cancer Detected
by TURP for BPH
Years 0-7

PSA Index



Tissue and Serum Bank

- Trial designed to obtain an end of study biopsy on 60% of randomized men
- Goal: Process fresh tissue centrally for **all** biopsies (interim and end of study)
- Whole mount prostatectomy samples
- Baseline serum sample collected on all randomized participants
- Follow-up serum sample collected at each of seven follow-up annual exams
- Banking goal: 4 aliquots of 0.5ml each at each collection

Karnofsky Lecture

Positive SWOG phase III trials

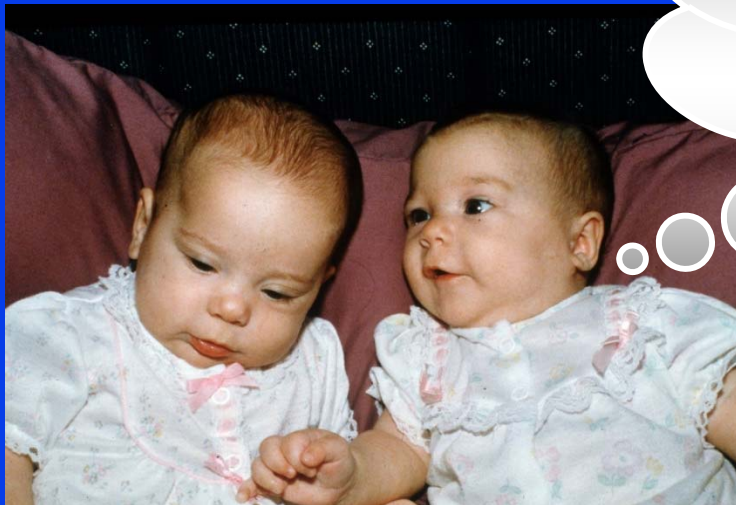
<u>Site</u>	<u>Studyid</u>	<u>Site</u>	<u>Studyid</u>
Breast	S7436, S8814, S8897	Leukemia	S8600, S9126
GI	S8591, S9008	Lung	S9308
GU	S8216/S8238, S8494, S8507, S8710, S8795, S8949	Lymphoma	S8516, S8736, S9133
GYN	S8412, S8501, S8797	Myeloma	S8624, S9210
HN	S8892		

GIRLS AT 5 MONTHS 2 DAYS

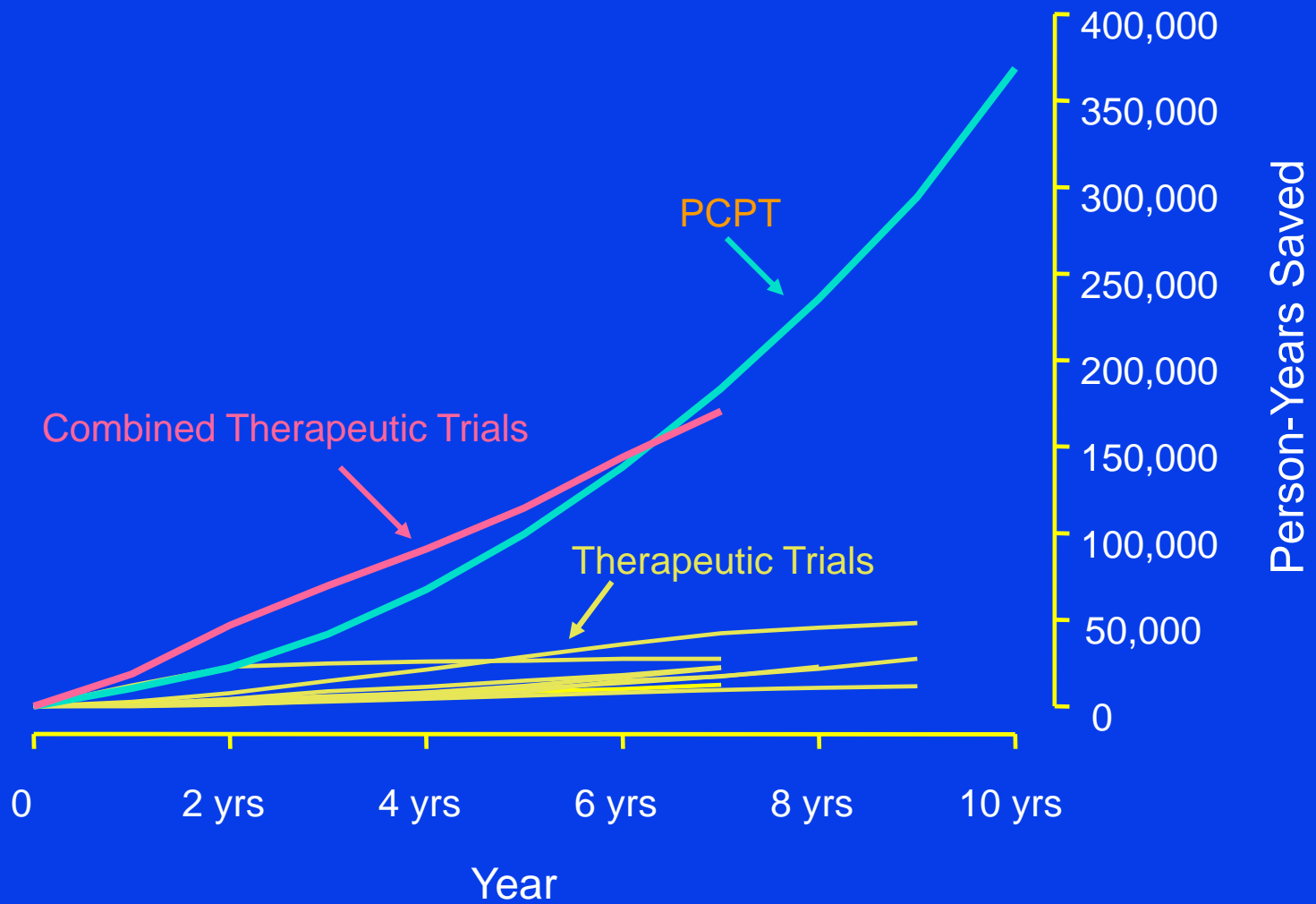
Sarah: "Quiet now! Daddy's going to give his address."



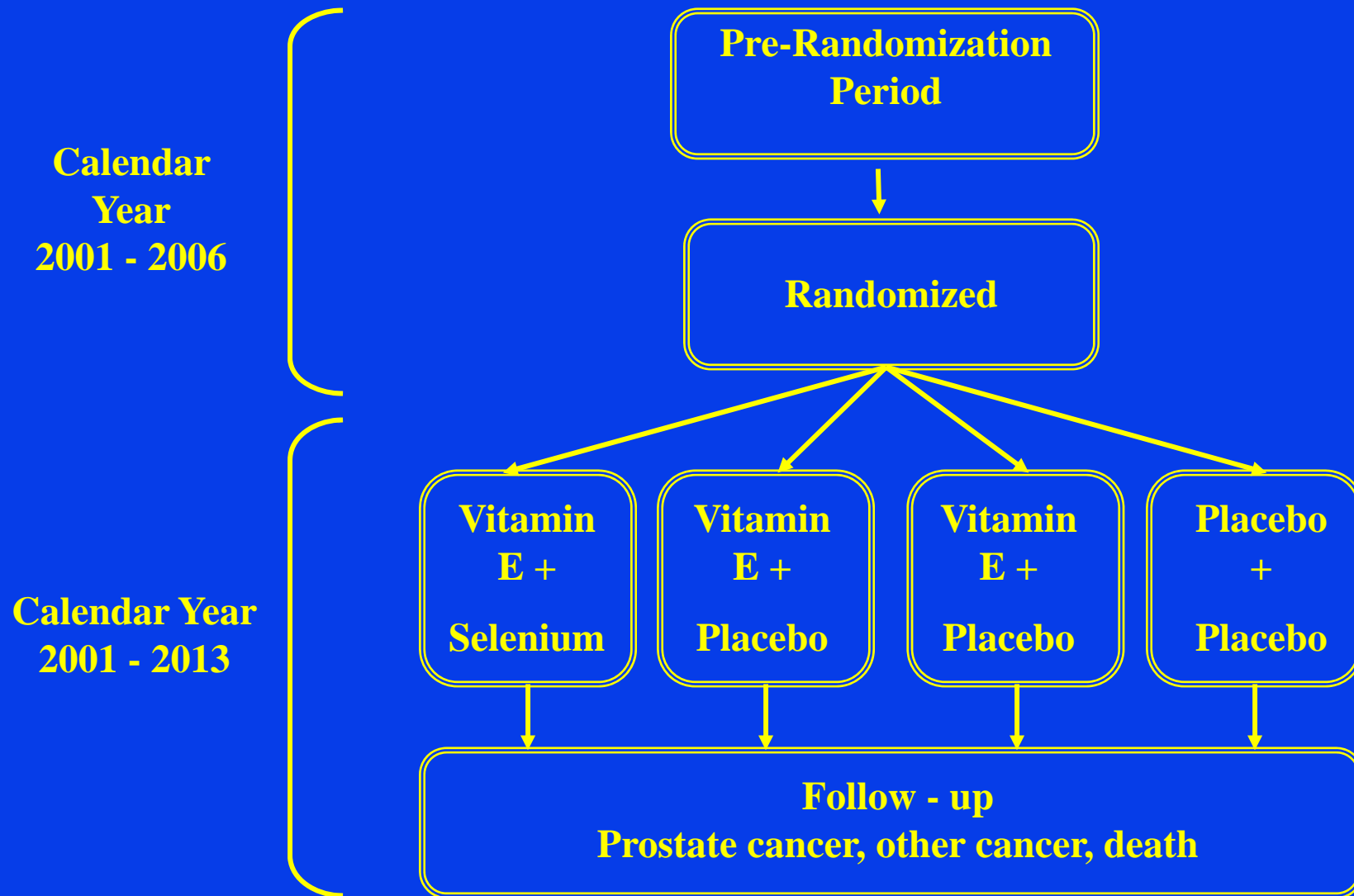
Ashley: "I hope he doesn't tell any dumb jokes."



Potential Person-Years Saved



SELECT Schema



Development of Common Arm Trial FACS*, JMTO* and SWOG* Lung Programs**

- **Separate Phase III Trials but with an identical Common Treatment Regimen in each**
- **Prospective Design and Conduct**
- **Common Eligibility and Staging**
- **Common Response and Toxicity Criteria**

***FACS: Four Arm Cooperative Study**

****JMTO: Japan Multi-National Trial Organization**

*****SWOG: Southwest Oncology Group**



Chuck Coltman on the Path of Philosophy Hanami

