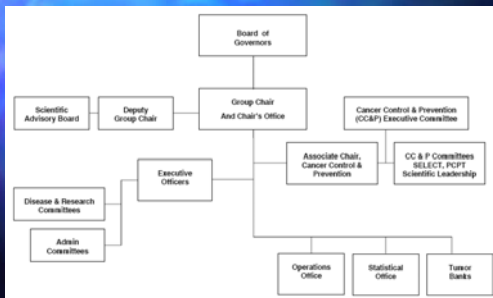


Southwest Oncology Group

Nursing Committee Orientation



Southwest Oncology Group Organizational Structure



What is the Role of Disease & Research Committees?

- Define research programs and scientific priorities of the Group
- Members develop protocols, monitor progress, publish results
- Integrate biologic correlates, translational research, & molecular/genetic questions into SWOG scientific initiatives (correlative science)
- Examples: Breast, GI, Leukemia

What is the Role of Administrative Committees?

- Members represent a specific discipline in the Group (CRA, Nursing, Surgery, Pharmacy, Radiation Therapy)
- Provide discipline-specific consultation and support to Disease Committees
- Assure quality control of data pertaining to the discipline
- Provide education and administrative support to the group

What is the Nursing Committee?

- An Administrative Committee within SWOG
- Nurses who are SWOG members via their institutional affiliation
- Dedicated to clinical oncology research and related educational efforts
- Work within SWOG committees to further SWOG initiatives and goals

Nursing Committee Structure



Administrative Members

Chair: Rose Ermete, RN, BSN, OCN®, CCRP
Vice Chair: Nancy Sprouse, RN, BSN, BS

- Responsible for direction of committee & reporting to Group chair
- Set agenda and priorities for addressing Group needs in relation to nursing and the mission of SWOG
- Facilitate activities of subcommittees
- Manage budget
- Present Committee accomplishments at Group Site Visit

Disease & Discipline

Marge Good, BSN, MPH, OCN®

- Purpose: Provide a nurse liaison to each Disease & Discipline Committee in SWOG
 - Protocol Development: Coordinate and assure quality of nurse liaison protocol reviews & contributions
 - Fast Fact Sheets: Coordinate and support nurse liaison development of fast fact sheets
 - Nurse Quality of Life Coordinators: Serve as resources to institutions and help assure quality control for studies with patient self report tools

Education

Dorothy Coleman, RN, MSN, CRRN
Nancy Sprouse, RN, BSN, BS

- Purpose: Collect, develop, evaluate and distribute educational materials, tools, other resources
 - Nursing Manual: Comprehensive resource on the SWOG website
 - Collaborate with Pharmacy Committee in Drug Manual Monographs
 - Coordinate NC roundtable @ Open Forum, orientation, posters, other projects
 - Nurse Auditor Program

Membership

Patra Grevstad, RN, MN

- To coordinate and recruit membership in NOC and NOC subcommittees
 - Maintains membership roster
 - Coordinate membership applications for NOC in collaboration with Ops. Office
 - Submits member applications for approval
 - Inform subcommittee chairs of new member interests

Program

Karen Mack, RNP, BSN, OCN[®], CCRP
Lisa Schmidt, RN, BSN, OCN[®]

- Provide NOC members and other SWOG members with timely information and quality educational offerings
 - Develop and carry out Biannual NC Workshop
 - Obtain CEUs for Nursing Committee Programs
 - Develop & conduct special educational programs
 - Collaborating with CRA Committee for educational presentations.

Research

Maggie Clarkson, RN, MS, AOCN[®]

- Purpose: Actively contribute to development of health outcome research within SWOG and provide symptom management research expertise to SWOG
 - Work with Cancer Control committees develop trials in symptom management, QOL, recruitment & retention issues
 - Educate members regarding cancer research
 - Identify & provide guidance to SWOG nurses interested in cancer treatment & control research

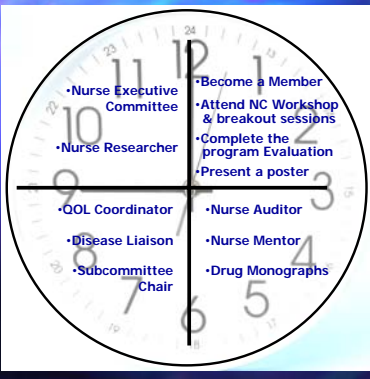
Executive Liaisons

- CCOP Liaison
 - Nancy Sprouse, RN, BSN, BS
- Cancer Prevention & Control
 - Lisa Hansen, RN, MS, AOCN®
 - Marge Good, BSN, MPH, OCN®

Clinical Trial Nurse Mentorship Program

- Collaborative effort with ONS
- <http://www.3creekmentoring.com/ONS>
 - Mentor: 361812
 - Mentee: 532398
- **Tools & Resources:**
<http://clinicaltrial.vc.ons.org>

Do you have the time to volunteer?



The clock face is divided into four quadrants by a vertical and a horizontal line. The roles are listed as follows:

- Top-Left Quadrant:**
 - Nurse Executive Committee
 - Nurse Researcher
- Top-Right Quadrant:**
 - Become a Member
 - Attend NC Workshop & breakout sessions
 - Complete the program Evaluation
 - Present a poster
- Bottom-Left Quadrant:**
 - QOL Coordinator
 - Disease Liaison
 - Subcommittee Chair
- Bottom-Right Quadrant:**
 - Nurse Auditor
 - Nurse Mentor
 - Drug Monographs

- Express your interests to anyone on the Nurse Executive Committee
- Involvement in the SWOG NC can help you grow professionally and expand your expertise in clinical oncology research!

Please ask questions!

We welcome your input
& involvement!
